

Technical data switches

1. General table

Switch	1690	1690 Ex	LMS-A	LMS-A-EEExd	MS09K	MS10 EExd
Case	synthetic	synthetic	Al Si 12	Al Si 12	synthetic	Aluminium
Contact function	bistable change-over contact	bistable change-over contact	bistable change-over contact **	bistable change-over contact	break- or make-contact, change-over contact	break- or make-contact, change-over contact
Dimension	20x15x80	20x15x80	65x65x40	Drm 138x80	110x75x50	120x120x110
Breaking on rupturing capacity	230VAC	230VAC	12 - 250 VAC	220VAC	250VAC	250VAC
	0,8A	0,6A	1,5A	1,5A	10A	10A
	60VA	45VA	80VA	80VA	---	---
Protective system	IP65	IP65	IP65 DIN40050	IP65 DIN40050	IP65 DIN40050	IP65 DIN40050
Option	IP67 DIN40050	IP67 DIN40050	---	---	---	---
Switch-hysteresis	15mm	15mm	8 - 12mm	8 - 12mm	---	---
Medium-temperature	max. 120°C	max. 120°C	max. 250°C *	max. 250°C *	max. 100°C	max. 200°C
EEx-protection	---	BVS 03 Atex E 126 X ExII 2G EEx m II T6/T5	---	EEx d II CT6	---	EEx dII CT6
Connection	---	---	PG7,5	4 connection (¾" NPT)	PG11	¾" NPT

Electric connection with 3-channel plug and earth.

For all Switches valid the international standard EN 60529.

* Typ LMS-AH with heat-protection-execution through a max. temperature of 400°C.

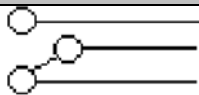
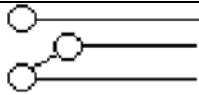
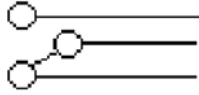
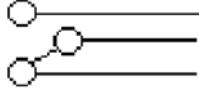
** available with gold-contact.

2. NI Ex NJ-Switch

Inherent safety EEx-switch, on inquiry with define error message.

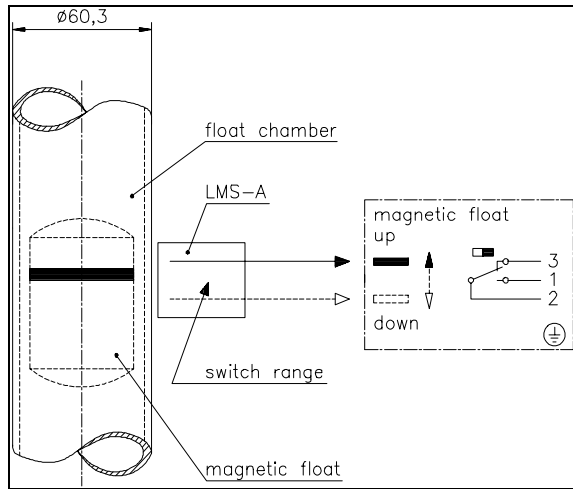
Contact-transmitter	supply voltage:	8V DC
	max. temperature:	60°C
	cabel connection at the case:	M20x1,5
Section switch appliance	supply voltage:	220V +15% (45 - 60Hz)
	power consumption:	≤ 1 W
	open-circuit voltage:	8V DC
	admit charge:	253 V AC
	admit temperature:	-20°C bis +60°C

3. Switchschema

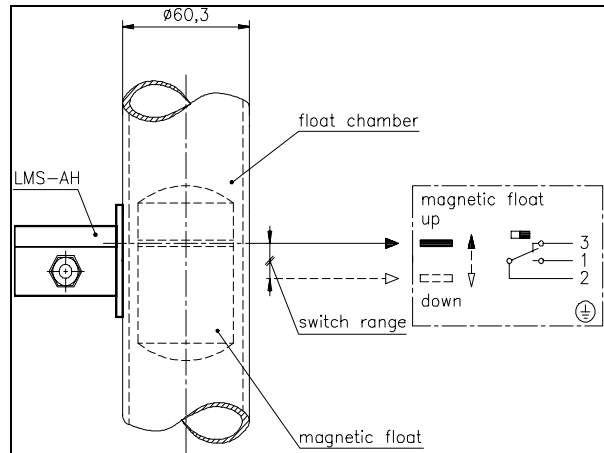
Type	Schema
1690	 <p>bistable change-over contact</p>
1690 EX	 <p>bistable change-over contact</p>
LMS-A	 <p>bistable change-over contact</p>
LMS-AH	 <p>bistable change-over contact</p>

Technical data switches

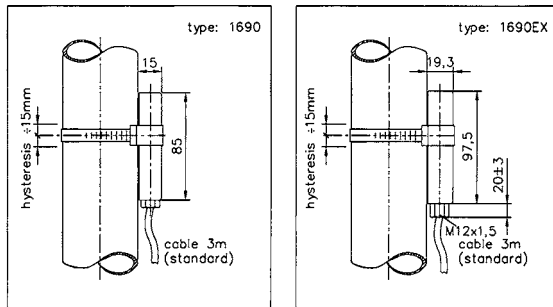
Switch LMS-A



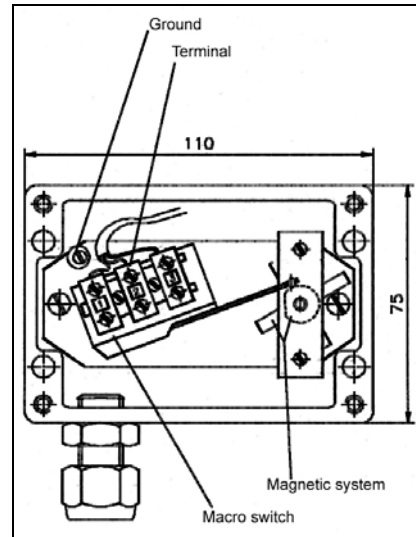
Switch LMS-AH



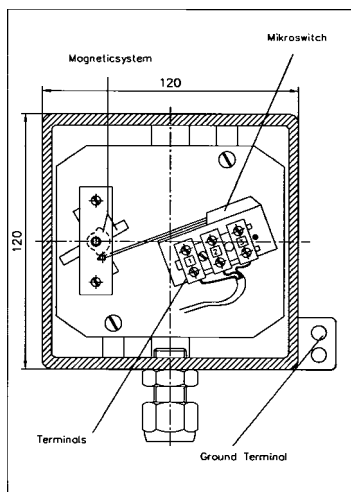
Switch 1690 / 1690 Ex



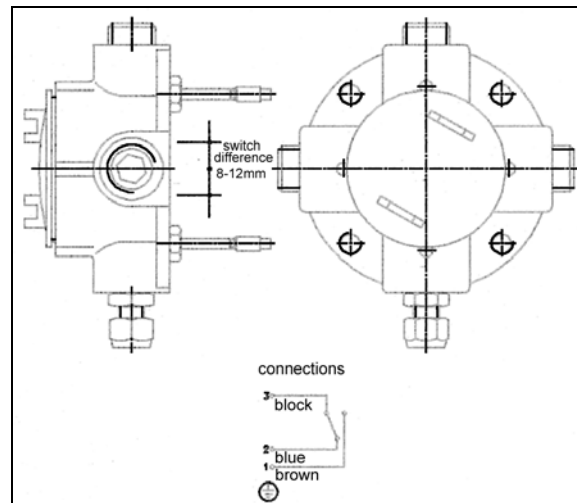
Switch MS 09 K



Switch MS 10 EExd

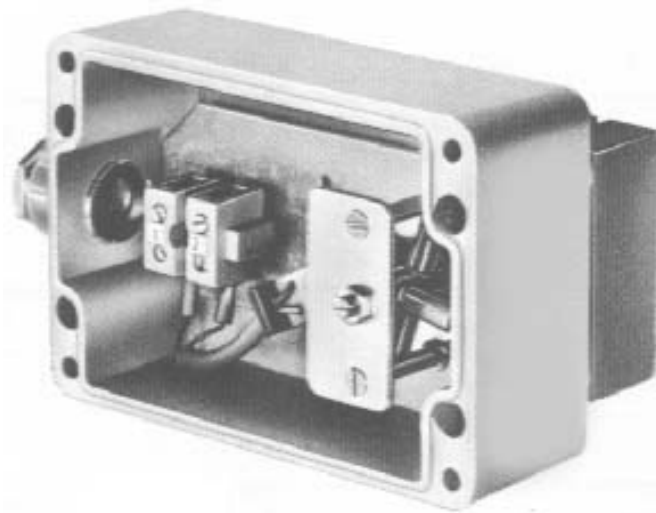
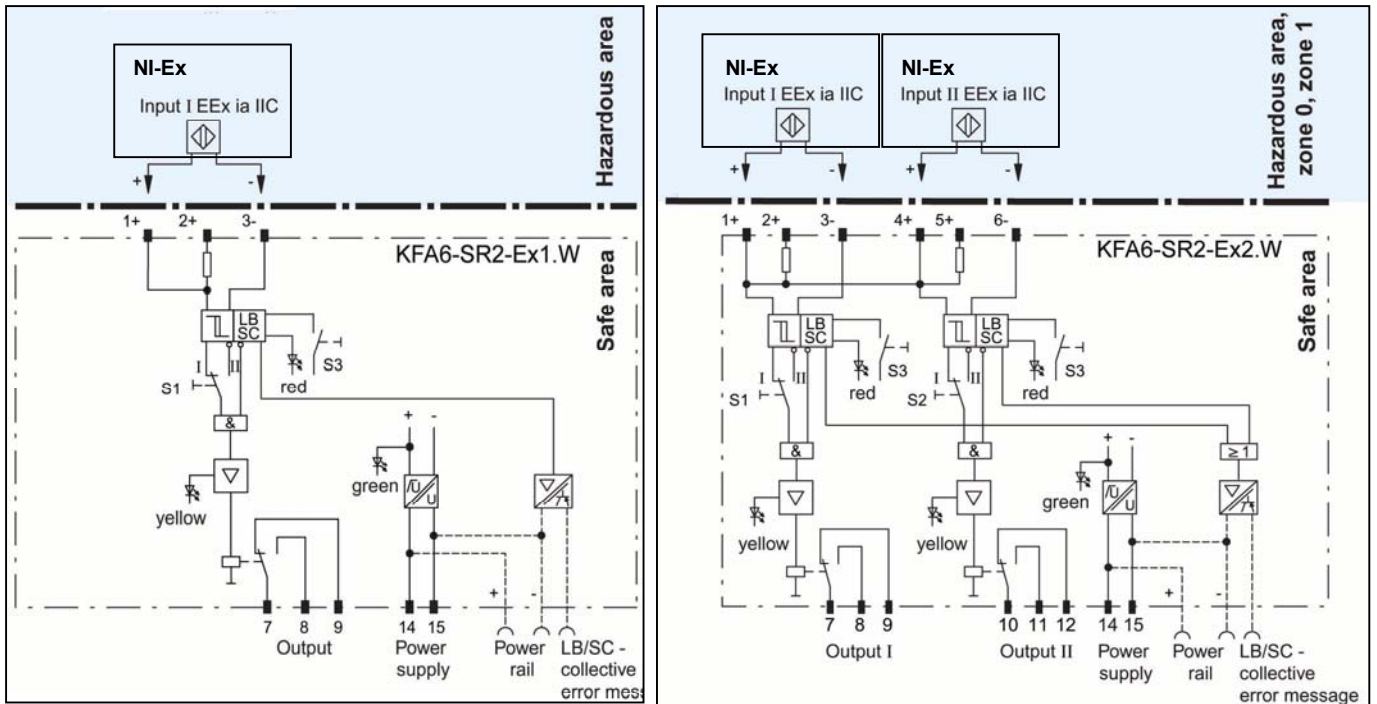


Switch LMS-A-Eexd



Technical data switches

Switch NI Ex NJ



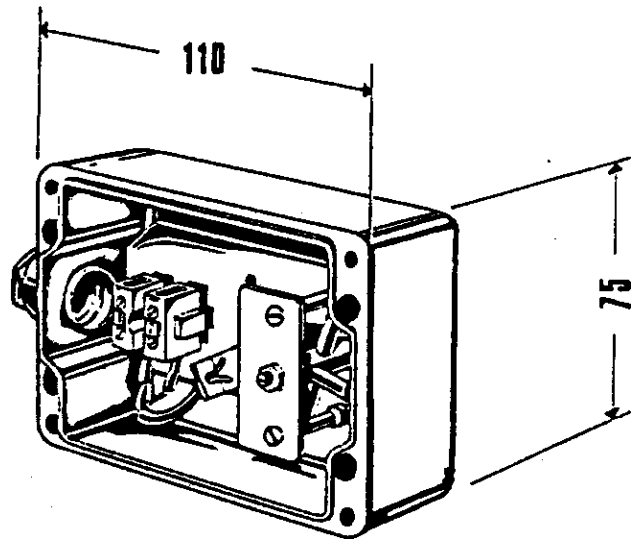
Switch NI-Ex-NJ

Contact NJ-EX

The Contact NJ-EX is an inductive contact NJ 1.5-6.5 N, kontex system, Protective system EEx ia IIC T6.

Function

Actuation is provided by the magnet installed in the float. The follow magnet system of the contact maker moves the switching disc, which serves for releasing the contact between two small inductances of the slotted initiator and thereby varies the attenuation of the resonant circuit.



Technical Data

electric connection : 8V DC
temp./ambient temp. : 60°C
cable connections : M20x1,5

Switch Relay

KFA6-SR2-Ex1.W : for 1 inductive contact EEx ia IIC
KFA6-SR2-Ex2.W : for 2 inductive contacts EEx ia IIC