

# Auxiliary Equipment for Pneumatic Control Valve

## **ASCO Three-way Solenoid Valve**

Model JE3J320G174

### **OVERVIEW**

The application of solenoid valves for switching the output of control valves forms a control loop with the pneumatic valve. Mounted between the valve actuator and positioner, the solenoid valve changes the output from supply to venting, and vice versa. Various specifications are available.

### **SPECIFICATIONS**

#### **Operation**

Universal

#### **Pneumatic connection**

Rc1/4

#### **Power supply**

100V AC, 200V AC

50/60 Hz, etc.

12V DC, 24V DC, etc.

#### **Main materials**

##### **Body**

Brass

##### **Main sheet**

Buner N

##### **Coil**

Type F mold coil

##### **Ambient temperature range**

-20 to 50°C

##### **Case**

General (indoor use)

Drip-proof (outdoor use)

JIS Flameproof Approval (outdoor use)

Conduit tube connection G1/2

For other specifications, please contact us.

Example: Material, coil insulation grade, manual operation, connection, etc.



Model JE3J320G174

**Basic Model Number Table**

**Table 1 Low-pressure applications**

Use	Supply air pressure Ps {kPa} <sup>*i</sup>	Model No. [Connection screw: Rc1/4]	Model No. [Connection screw: NPT1/4]
General (indoor use)	Ps ≤ 270 kPa {2.8 kgf/cm <sup>2</sup> }	J320A107	8320A107
	Ps > 270 kPa {2.8 kgf/cm <sup>2</sup> }	J320G174	8320G174
Drip-proof (outdoor use)	Ps ≤ 270 kPa {2.8 kgf/cm <sup>2</sup> }	J320A108	8320A108
	Ps > 270 kPa {2.8 kgf/cm <sup>2</sup> }	J320G174	8320G174
Flameproof (JIS d2G4)	Ps ≤ 270 kPa {2.8 kgf/cm <sup>2</sup> }	JE3J320A107	JE38320A107
	Ps > 270 kPa {2.8 kgf/cm <sup>2</sup> }	JE3J320G174	JE38320G174

Note \*i. Ps value are for "Supply air pressure" in the allowable pressure difference table in control valve specification sheets.

**Applicable actuator**

- Diaphragm actuator: Model PSA1-4, HA6, VA1-5, HK, VM12, VR1-3 (excluding VR3/supply air pressure 490 kPa)
- Geomotor actuator: Model GOM

**Combination of diaphragm actuator (positive actuation), positioner, and three-way solenoid valve**

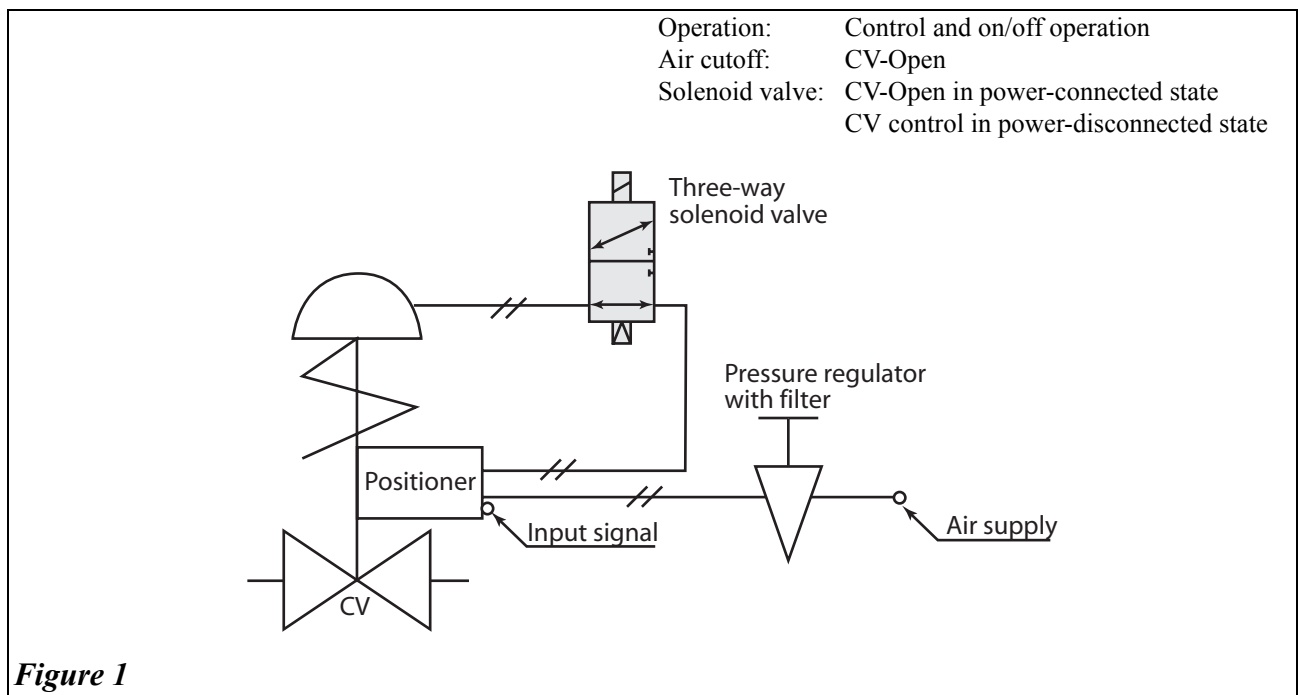


Figure 1

**Table 2 High-pressure applications**

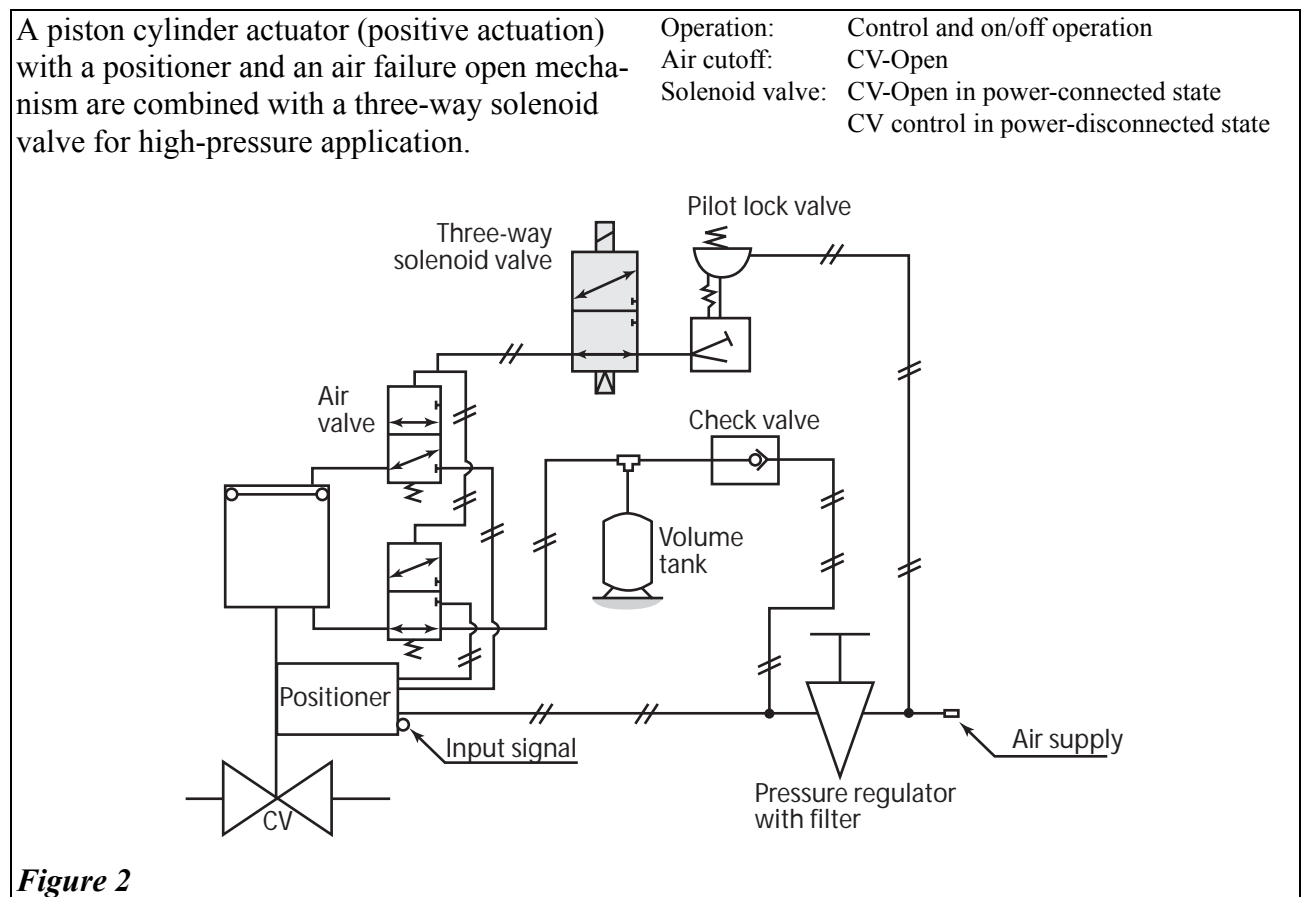
Use	Supply air pressure Ps {kPa} *i	Model No. [Connection screw: Rc1/4]	Model No. [Connection screw: NPT1/4]
General (indoor use)	Ps ≤ 860 kPa {8.7 kgf/cm <sup>2</sup> }	J320A101	8320A101
Drip-proof (outdoor use)	Ps ≤ 860 kPa {8.7 kgf/cm <sup>2</sup> }	J320A102	8320A102
Flameproof (JIS d2G4)	Ps ≤ 860 kPa {8.7 kgf/cm <sup>2</sup> }	JE3J320A101	JE38320A101

Note \*i. Ps value are maximum supply air pressure value used by customers. (They do not indicate supply air pressure to an actuator.)

**Applicable actuator:**

- Spring piston cylinder actuator: Model PSA6
- Springless piston cylinder actuator: Model VP, SLOP

**Combination of springless piston cylinder, positioner, air-failure open mechanism, and three-way solenoid valve**



**Figure 2**

**azbil**

---

**Yamatake Corporation**  
**Advanced Automation Company**

1-12-2 Kawana, Fujisawa  
Kanagawa 251-8522 Japan

**URL:**<http://www.azbil.com>